


<div><div>FÖRSTER TECHNIK®</div><div>S11.1e</div></div>	Mounting instructions: UpdateManager		
	Re:	SA2(+), SA2000, SM2Plus, Compact, Vario, Concentrate feeder, Animal scales, Automatic Fever Measuring	
	Date	October 16, 2007	
Page 1 of 29	Mounting and operating instructions		

UpdateManager

1 Introduction



Note: Before updating the program of the automatic feeder you should always download the **current version** of the **UpdateManager** from the **Förster-website**. To do so, access the dealer area and click the category **Software-updates**.

The Update facilitates the following:

- **SA2(Plus)** as of program version 1.00: Before changing the program, the data stored in the automatic feeder are saved and played back after program change.
- **SM2Plus, concentrate feeder, animal scales and automatic fever measuring system:** Program update.
- **SA2000** as of program version 0.06, **Compact** and **Vario:** Before updating the program, the data stored in the automatic feeder can be saved on your hard disc or similar and played back into memory of the automatic feeder after update.

Mounting instructions: UpdateManager

Re: SA2(+), SA2000, SM2Plus, Compact, Vario, Concentrate feeder, Animal scales, Automatic Fever Measuring

Date October 16, 2007



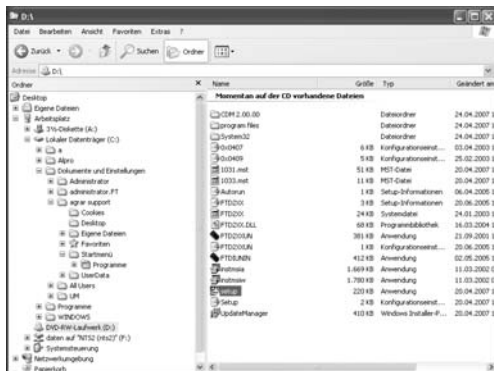
Mounting and operating instructions

2 Installing the UpdateManager




Note: To install the UpdateManager onto a PC/notebook etc. **administrator rights** are required.

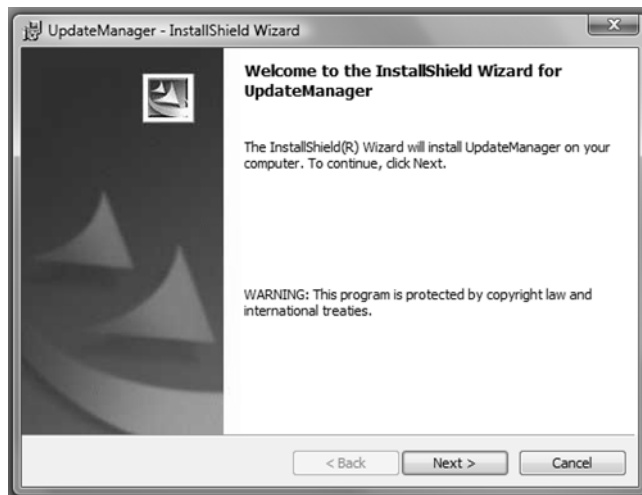
1. Double-click the file **setup** (type: application).



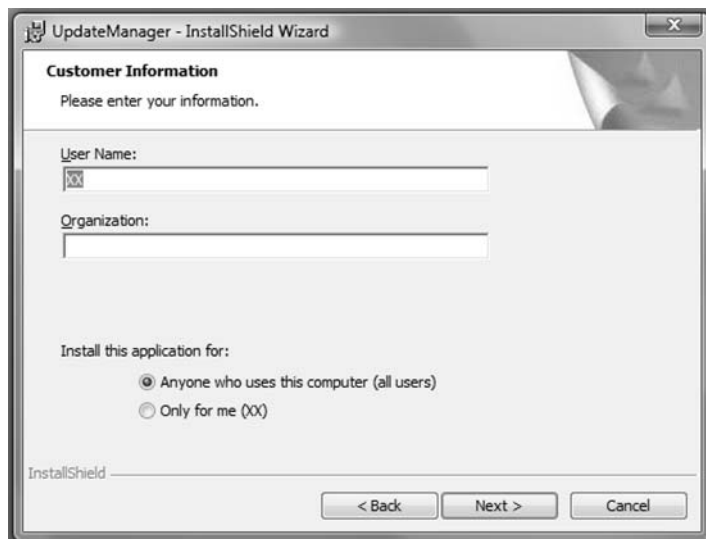
2. Follow the instructions displayed on the screen.



<p>FÖRSTER TECHNIK®</p> <p>S11.1e</p>	<p>Mounting instructions: UpdateManager</p> <p>Re: SA2(+), SA2000, SM2Plus, Compact, Vario, Concentrate feeder, Animal scales, Automatic Fever Measuring</p> <p>Date October 16, 2007</p>	
<p>Page 3 of 29</p>	<p>Mounting and operating instructions</p>	



3. Enter the **User name** and the **Organization** and click **Next**.



Mounting instructions: UpdateManager

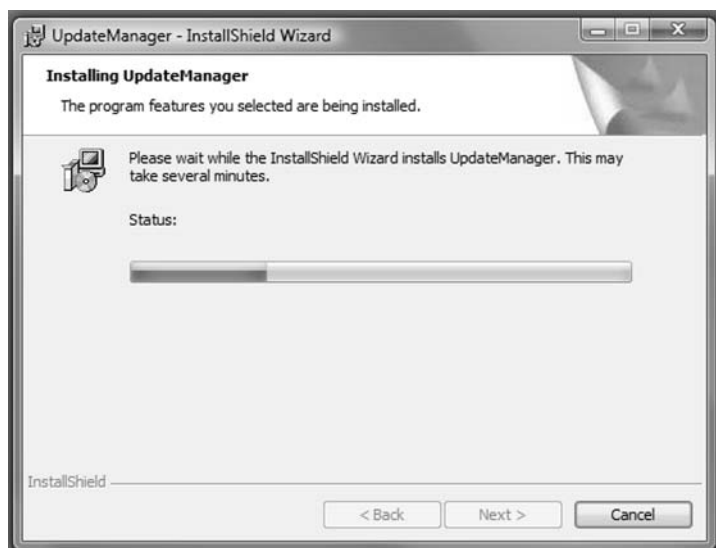
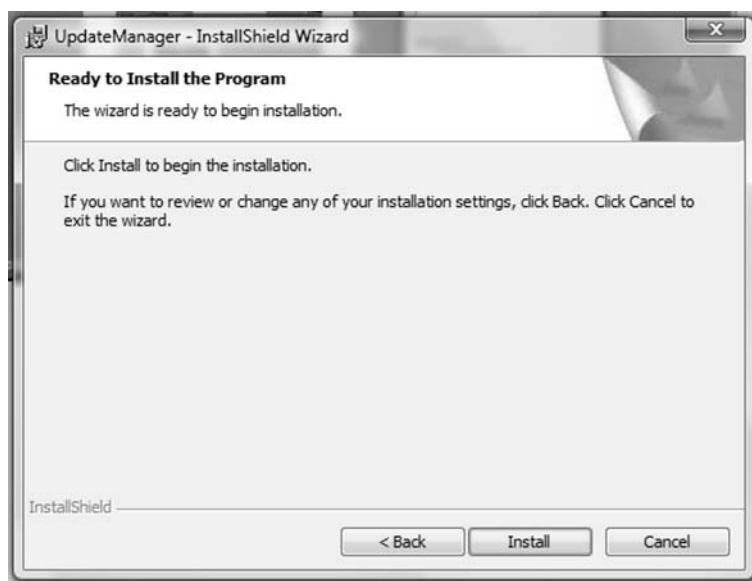
Re: SA2(+), SA2000, SM2Plus, Compact, Vario, Concentrate feeder, Animal scales, Automatic Fever Measuring

Date October 16, 2007



Mounting and operating instructions

- Click **Install** to install the UpdateManager onto your PC.



- If the program has been successfully installed, the following window will be displayed.

Mounting instructions: UpdateManager

Re: SA2(+), SA2000, SM2Plus, Compact, Vario, Concentrate feeder, Animal scales, Automatic Fever Measuring

Date October 16, 2007



Mounting and operating instructions



Mounting instructions: UpdateManager

Re: SA2(+), SA2000, SM2Plus, Compact, Vario, Concentrate feeder, Animal scales, Automatic Fever Measuring

Date October 16, 2007



Mounting and operating instructions

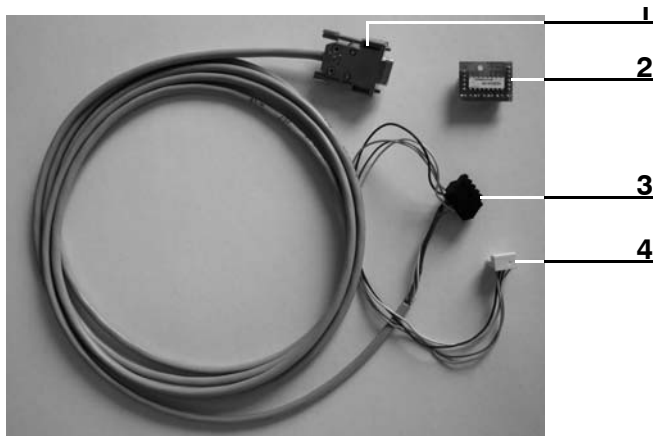
3 Preparing the update

To update the program of an automatic feeder etc. from Förster-Technik, make sure to establish cable-based connection between the control of the automatic feeder, etc. and the PC/ UpdateManagerWIN. To do so, the Update-set is required.


3.1 D-Sub-Update-Set



Note: The D-Sub-Update-Set cannot be used to update the control programs of the hand-held terminal and the IFS.



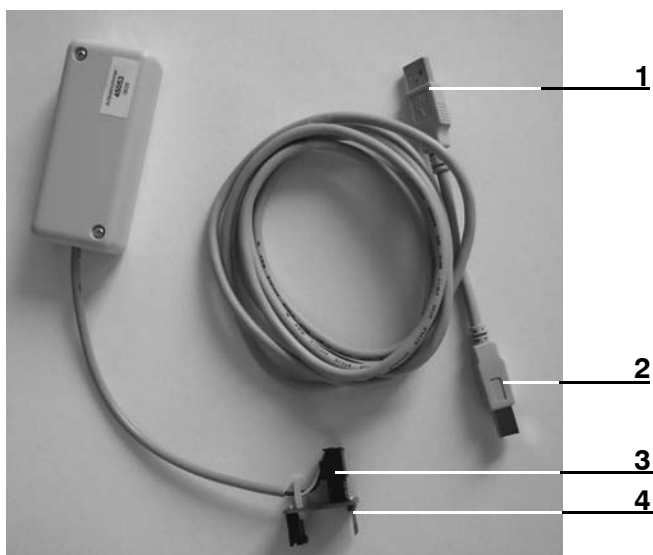
1	D-Sub-plug for connection to PC
2	RS 232 interface board
3	Five-pole plug (black/big)
4	Five-pole plug (white/small) for SA2(Plus)

<div><div>FÖRSTER TECHNIK®</div><div>S11.1e</div></div>	Mounting instructions: UpdateManager		
	Re:	SA2(+), SA2000, SM2Plus, Compact, Vario, Concentrate feeder, Animal scales, Automatic Fever Measuring	
	Date	October 16, 2007	
Page 7 of 29	Mounting and operating instructions		

3.2 USB-Update-Set



Note: The USB-Update-Set can be used without restrictions to update all Förster-controls.



1	USB-plug for connection to PC
2	Plug for connection to USB-box
3	Four-pole plug (black/big)
4	Interface board

Before using the USB-Update-Set, make sure to install the corresponding driver onto your PC/notebook.

1. Insert the CD with the current UpdateManager-version.
2. Insert the USB-plug into the USB-slot of the PC/notebook.

Mounting instructions: UpdateManager

Re: SA2(+), SA2000, SM2Plus, Compact, Vario, Concentrate feeder, Animal scales, Automatic Fever Measuring

Date October 16, 2007



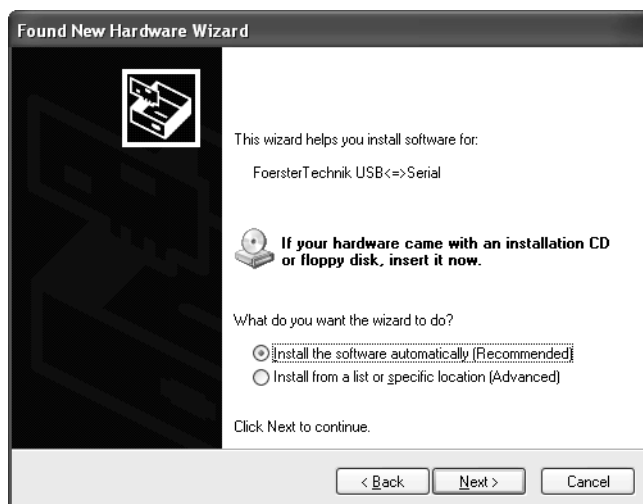
Mounting and operating instructions

3. The start window of the hardware-assistent is displayed.

Select **No, not this time** and click **Continue**.



4. If the CD is inserted, select **Install the software automatically (Recommended)**.



5. The driver of the USB-Update-Set is searched for on the CD and installed.

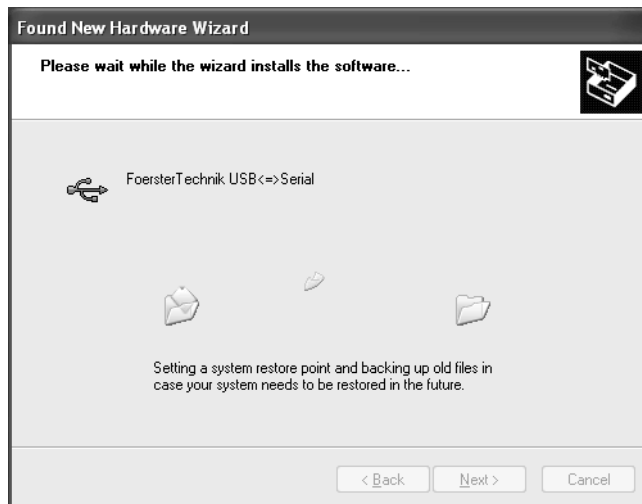
Mounting instructions: UpdateManager

Re: SA2(+), SA2000, SM2Plus, Compact, Vario, Concentrate feeder, Animal scales, Automatic Fever Measuring

Date October 16, 2007



Mounting and operating instructions



6. Confirm the following message (...has not passed Windows Logo testing...) by clicking **Continue Anyway**.



Mounting instructions: UpdateManager

Re: SA2(+), SA2000, SM2Plus, Compact, Vario, Concentrate feeder, Animal scales, Automatic Fever Measuring

Date October 16, 2007



Mounting and operating instructions

- After successful installation of the driver, the following message is displayed. Click **Finish** to confirm.



Mounting instructions: UpdateManager

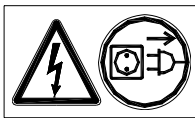
Re: SA2(+), SA2000, SM2Plus, Compact, Vario, Concentrate feeder, Animal scales, Automatic Fever Measuring

Date October 16, 2007



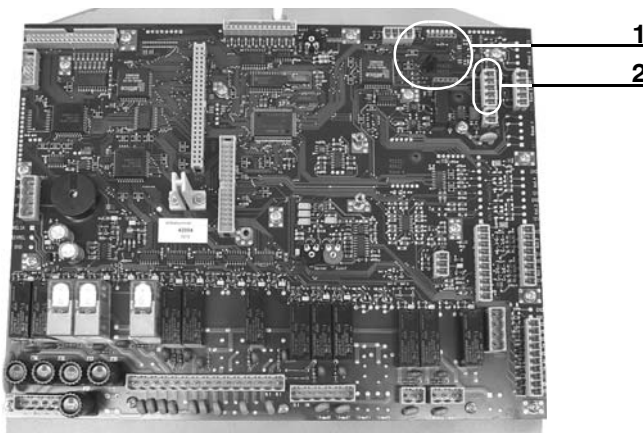
Mounting and operating instructions

4 Connecting the Update-Set to the connections on the board



Danger: Shut off power to the machine before the plug or/and interface boards of the Update-Sets are inserted into the connections of the board of the corresponding device.

4.1 SA2000 (as of version 00.06)



- 1 Plug-in location for interface board of the USB-Update-Set and plug-in location for interface board RS 232
- 2 Plug-in location for five-pole plug of the D-Sub-Update-Set; only together with the interface board RS 232

Mounting instructions: UpdateManager

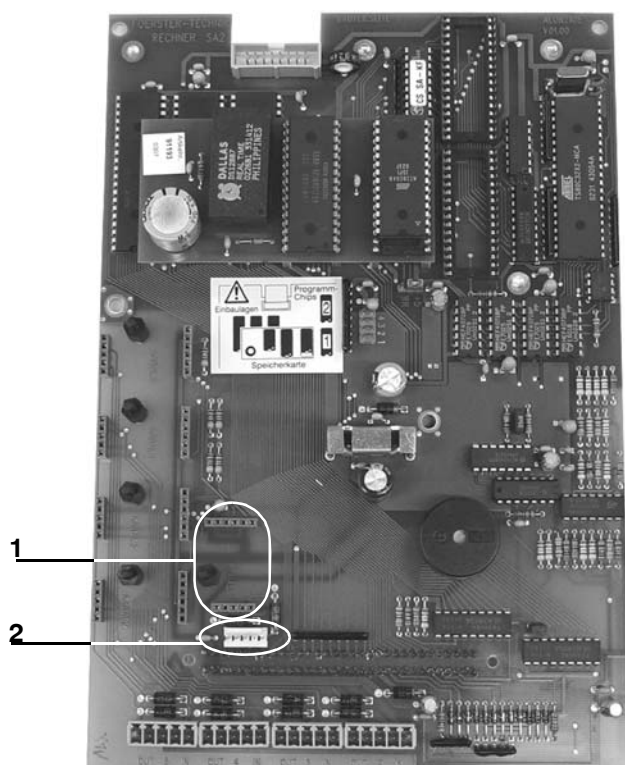
Re: SA2(+), SA2000, SM2Plus, Compact, Vario, Concentrate feeder, Animal scales, Automatic Fever Measuring

Date October 16, 2007



Mounting and operating instructions

4.2 SA2 (as of version 1.00) and SA2Plus



- 1 Plug-in location for interface board of the USB-Update-Set and plug-in location for interface board RS 232
- 2 Plug-in location for five-pole plug of the D-Sub-Update-Set; only together with the interface board RS 232

Mounting instructions: UpdateManager

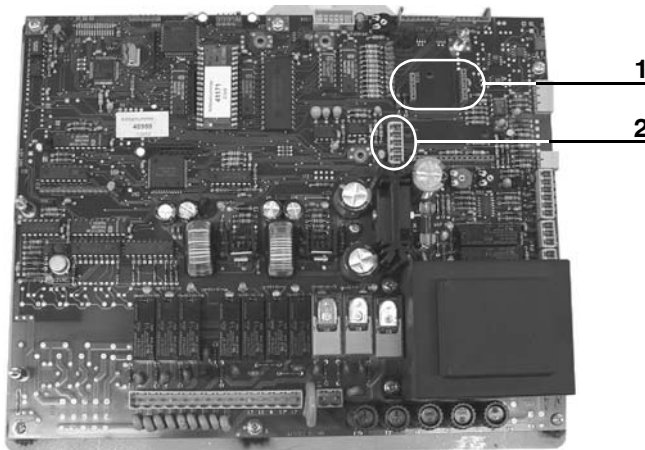
Re: SA2(+), SA2000, SM2Plus, Compact, Vario, Concentrate feeder, Animal scales, Automatic Fever Measuring

Date October 16, 2007



Mounting and operating instructions

4.3 SM2Plus (Variant 1)



- 1 Plug-in location for interface board of the USB-Update-Set and plug-in location for interface board RS 232
- 2 Plug-in location for five-pole plug of the D-Sub-Update-Set; only together with the interface board RS 232

Mounting instructions: UpdateManager

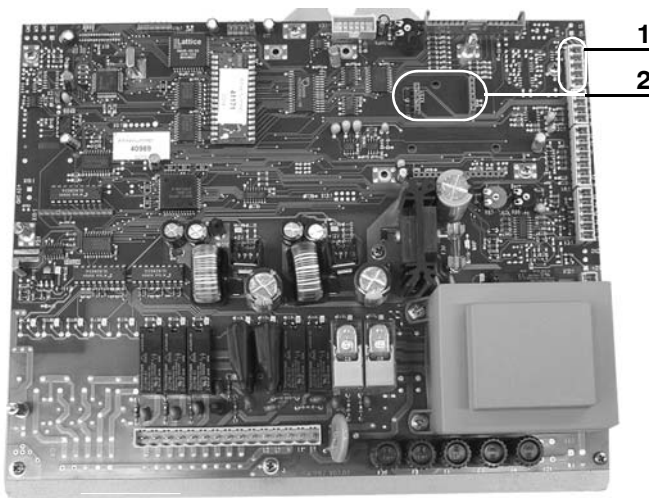
Re: SA2(+), SA2000, SM2Plus, Compact, Vario, Concentrate feeder, Animal scales, Automatic Fever Measuring

Date October 16, 2007



Mounting and operating instructions

4.4 SM2Plus (Variant 2)



1 Plug-in location for five-pole plug of the D-Sub-Update-Set; only together with the interface board RS 232

2 Plug-in location for interface board of the USB-Update-Set and plug-in location for interface board RS 232

Mounting instructions: UpdateManager

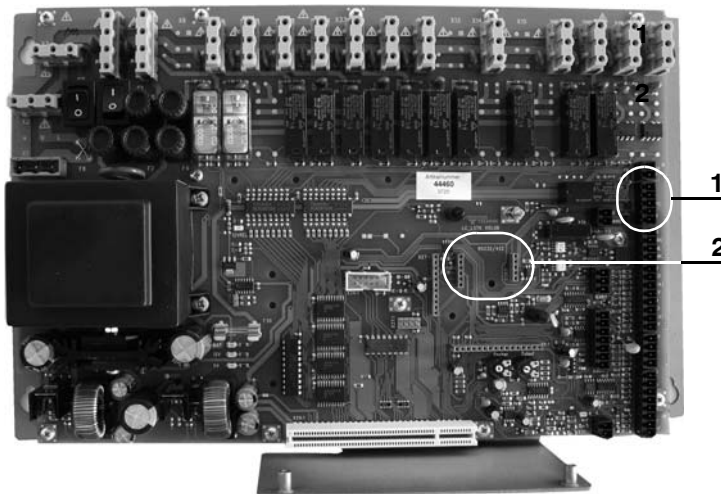
Re: SA2(+), SA2000, SM2Plus, Compact, Vario, Concentrate feeder, Animal scales, Automatic Fever Measuring

Date October 16, 2007



Mounting and operating instructions

4.5 Vario



- 1 Plug-in location for five-pole plug of the D-Sub-Update-Set; only together with interface board RS 232
- 2 Plug-in location for interface board of the USB-Update-Set and plug-in location for interface board RS 232

Mounting instructions: UpdateManager

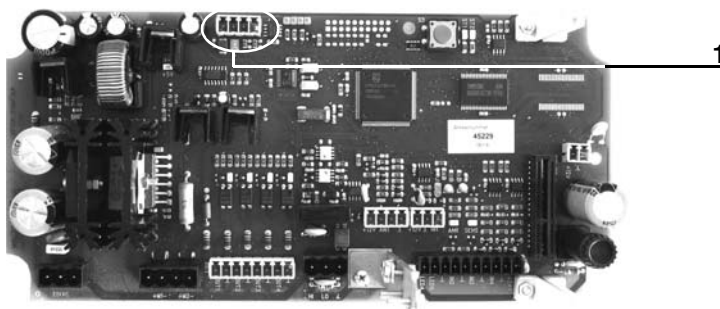
Re: SA2(+), SA2000, SM2Plus, Compact, Vario, Concentrate feeder, Animal scales, Automatic Fever Measuring

Date October 16, 2007



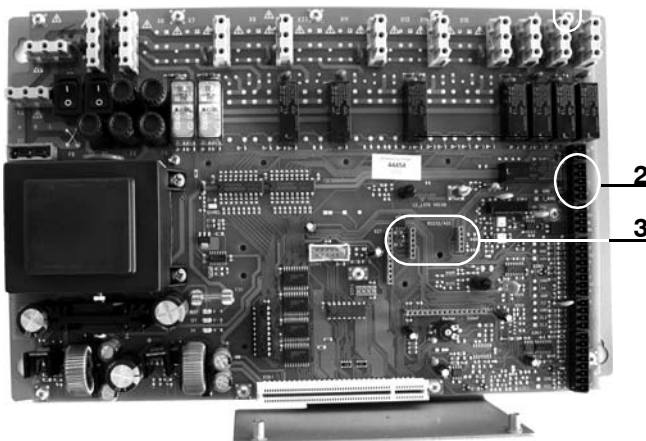
Mounting and operating instructions

4.6 IFS




1 Plug-in location for four-pole plug of the USB-Update-Set

4.7 Compact




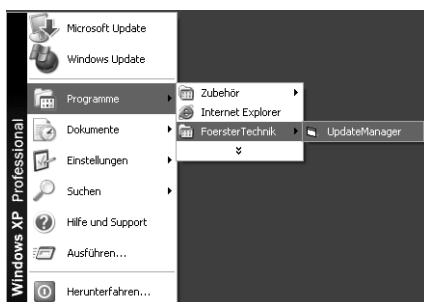
2 Plug-in location for five-pole plug; only together with interface board RS 232

3 Plug-in location for interface board of the USB-Update-Set and plug-in location for interface board RS 232

<div><div>FÖRSTER TECHNIK®</div><div>S11.1e</div></div>	Mounting instructions: UpdateManager		
	Re:	SA2(+), SA2000, SM2Plus, Compact, Vario, Concentrate feeder, Animal scales, Automatic Fever Measuring	
	Date	October 16, 2007	
Page 17 of 29	Mounting and operating instructions		

5 Using the UpdateManager

1. This first step only applies to the automatic feeders Vario and Compact: Press  and keep the key pressed when switching the automatic feeder on. After a short time the Setup-menus of the corresponding automatic feeder will be displayed.
2. Start the UpdateManager. You will find the software in the Windows-menu under **Programs > Förster-Technik > UpdateManager**.



5.1 Setup

1. Click **Setup** in the Menu-bar of the start window.

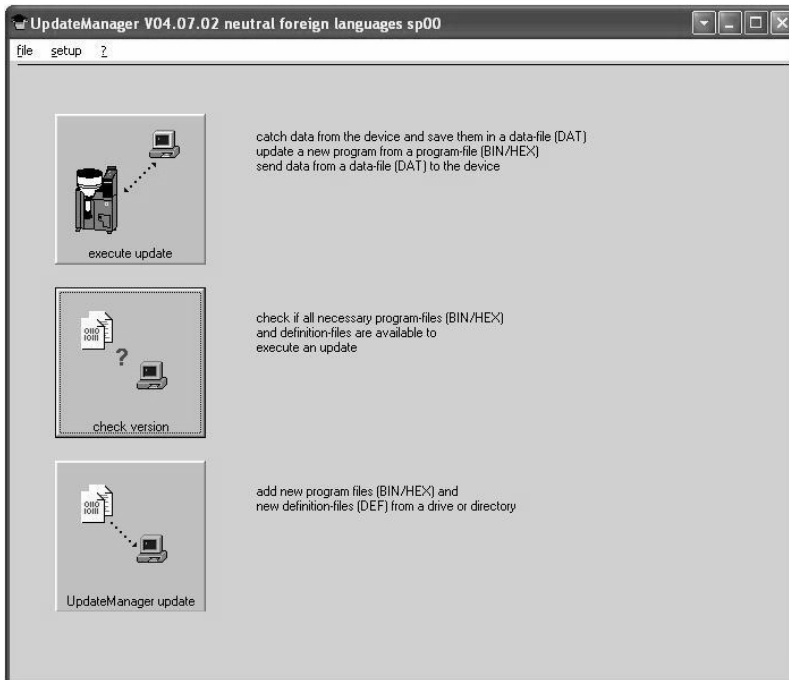
Mounting instructions: UpdateManager

Re: SA2(+), SA2000, SM2Plus, Compact, Vario, Concentrate feeder, Animal scales, Automatic Fever Measuring

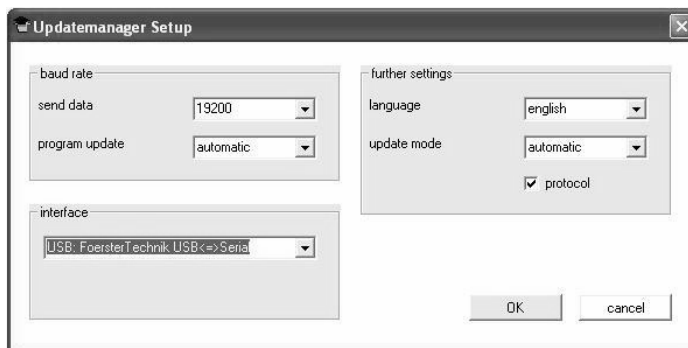
Date October 16, 2007



Mounting and operating instructions



2. In the **Setup** of the UpdateManager the basic settings for data exchange between PC/UpdateManager and automatic feeder are carried out.



- 2.1 The selection menus **send data** (19200) and **program update** (automatic) must remain unchanged.

Mounting instructions: UpdateManager

Re: SA2(+), SA2000, SM2Plus, Compact, Vario, Concentrate feeder, Animal scales, Automatic Fever Measuring

Date October 16, 2007

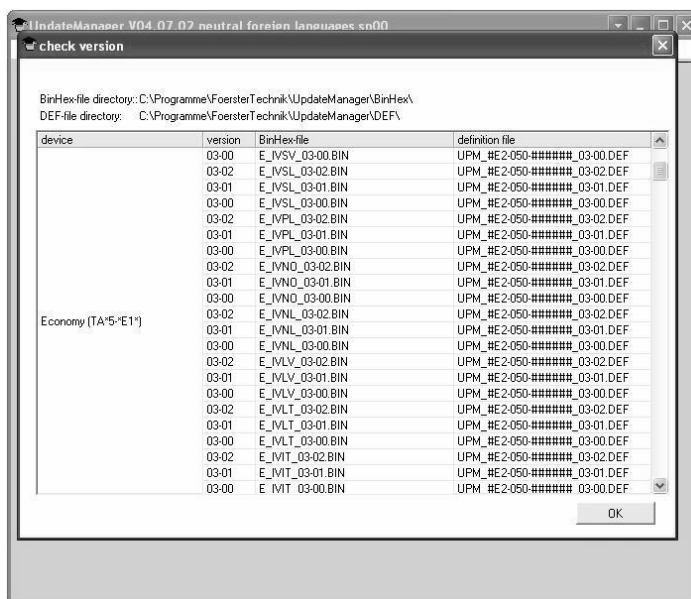


Mounting and operating instructions

- 2.2 Select the **interface** used for data exchange between PC and automatic feeder. If already several automatic feeders have been installed, in **interface converter** select the automatic feeder(s) to be updated.
- 2.3 In **update mode** you should select **automatic**.
- 2.4 Only click the checkbox **protocol** when an error has occurred. All operations of the UpdateManager are then logged in a separate window.
- 2.5 Click **OK** to save the changes and close the window.

5.2 Checking the versions

1. If you want to check which program versions of the corresponding automatic feeder can be updated, click **check versions** in the start window.



2. Close the window.

Mounting instructions: UpdateManager

Re: SA2(+), SA2000, SM2Plus, Compact, Vario, Concentrate feeder, Animal scales, Automatic Fever Measuring

Date October 16, 2007



Mounting and operating instructions

5.3 Carrying out the update

1. Click **execute update** in the start window.

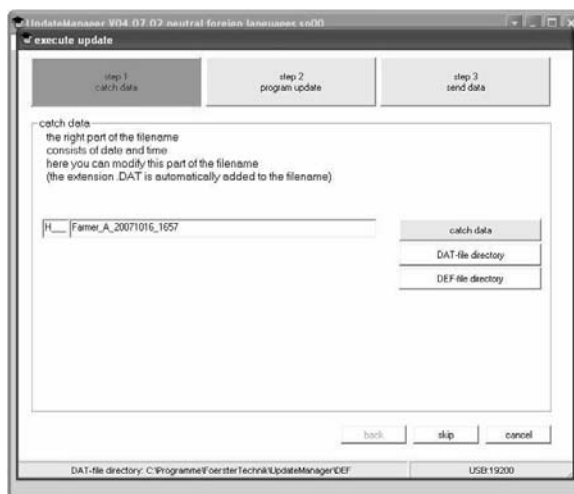
5.3.1 Step 1: Catching data

The data (animal data, plans etc.) can be saved from the data storage of the automatic feeder (SA2000 as of version 0.06, SA2 as of version 1.00, SA2Plus, Compact and Vario all versions) and played back into your PC/notebook via the UpdateManager.

1. If necessary, enter a new file name and click **Step 1: Catch data**.



Note: The data are saved as a standard under **C:/Programs/FoersterTechnik/UpdateManager/DAT**. But you can also choose another location to buffer the data. To do so, in the **menu bar** of the start window click **file** and select **define DAT-file directory**.



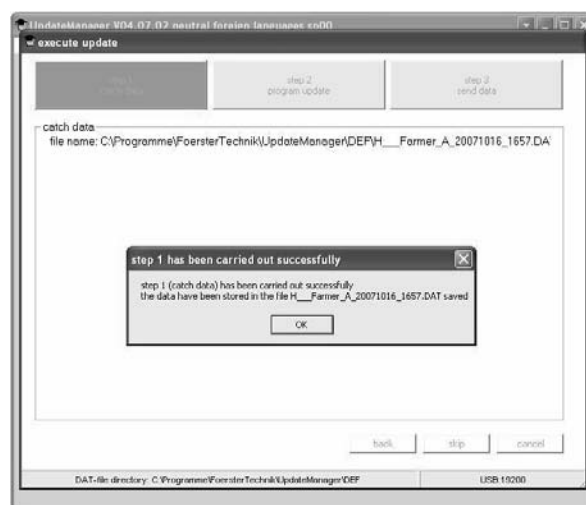
Mounting instructions: UpdateManager

Re: SA2(+), SA2000, SM2Plus, Compact, Vario, Concentrate feeder, Animal scales, Automatic Fever Measuring

Date October 16, 2007



Mounting and operating instructions



5.3.2 Step 2: Program-update

The program-update allows you to update the program files of Compact, Vario, SA2000 (as of version 00.06), hand-held terminal, IFS (Intelligent Feeding Station), SM2Plus, concentrate feeder, animal scales and Automatic Fever Measuring System.

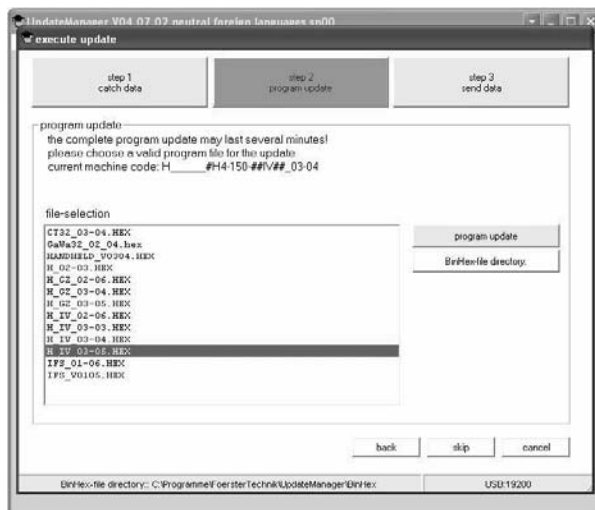
Mounting instructions: UpdateManager

Re: SA2(+), SA2000, SM2Plus, Compact, Vario, Concentrate feeder, Animal scales, Automatic Fever Measuring

Date October 16, 2007



Mounting and operating instructions



1. Select the program file. As a rule, the name of the current file, which is compliant with the program of the automatic feeder, is highlighted so that you just have to click **program update**.



Note: If you have stored the program file on an external data carrier, select the corresponding file in the **directory BinHex** and only then start program-update.



Note: If you would like to get even older program files displayed, click the checkbox **display all files**.

2. Click **yes** to confirm the following query.

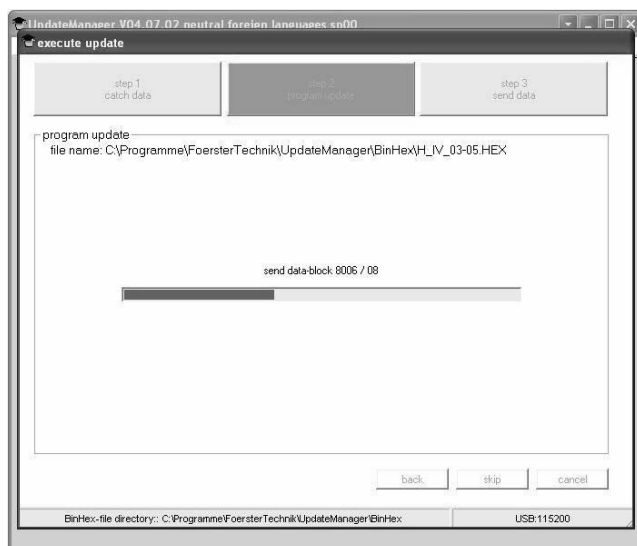
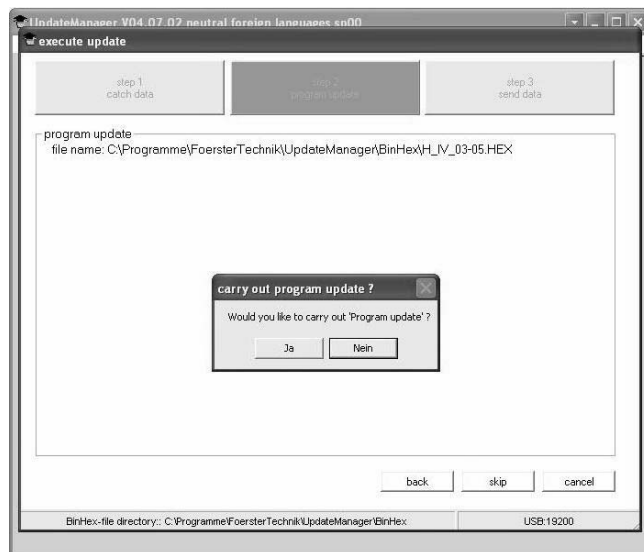
Mounting instructions: UpdateManager

Re: SA2(+), SA2000, SM2Plus, Compact, Vario, Concentrate feeder, Animal scales, Automatic Fever Measuring

Date October 16, 2007



Mounting and operating instructions



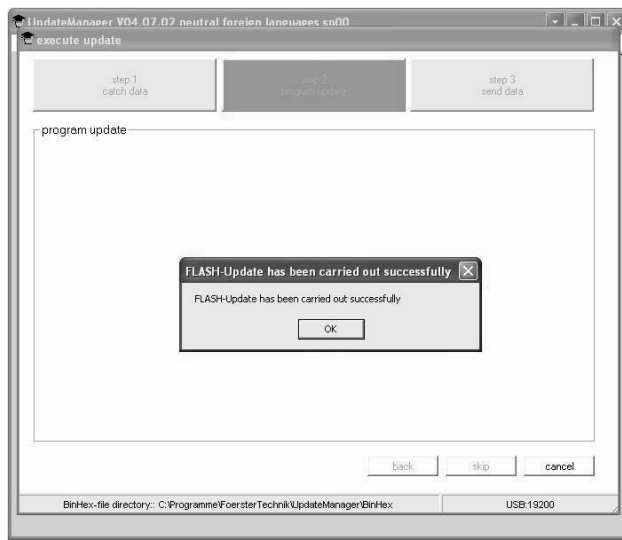
Mounting instructions: UpdateManager

Re: SA2(+), SA2000, SM2Plus, Compact, Vario, Concentrate feeder, Animal scales, Automatic Fever Measuring

Date October 16, 2007



Mounting and operating instructions



5.3.3 Step 3: Sending data

If you would like to play back the buffered data into the data storage of the automatic feeder, select the corresponding file and click **send data**.

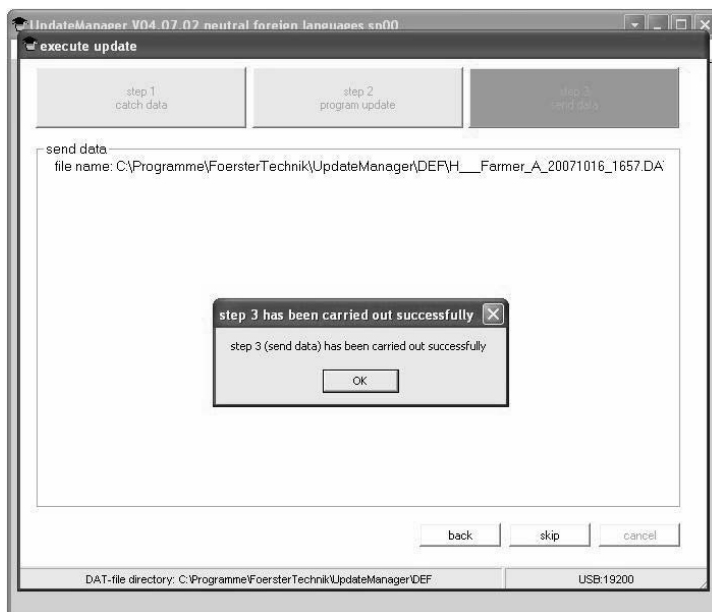
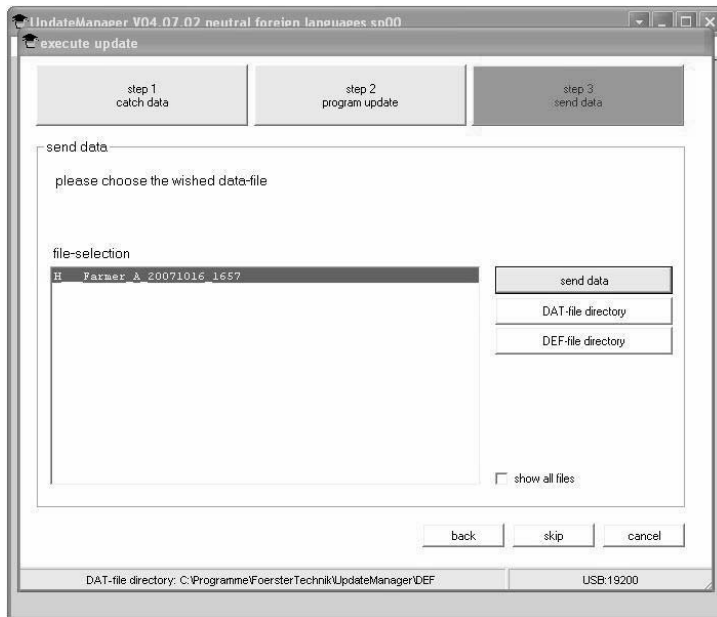
Mounting instructions: UpdateManager

Re: SA2(+), SA2000, SM2Plus, Compact, Vario, Concentrate feeder, Animal scales, Automatic Fever Measuring

Date October 16, 2007



Mounting and operating instructions



Mounting instructions: UpdateManager

Re: SA2(+), SA2000, SM2Plus, Compact, Vario, Concentrate feeder, Animal scales, Automatic Fever Measuring

Date October 16, 2007



Mounting and operating instructions

5.4 Troubleshooting

5.4.1 No connection



Fault	Cause	Remedy
No connection	<ul style="list-style-type: none"> Incorrect cable connection 	Check the cable and plug-in connections.
	<ul style="list-style-type: none"> Automatic feeder not in the setup-mode 	<ol style="list-style-type: none"> 1. Break off update. 2. Restart the automatic feeder and open the set-up-menu of the automatic feeder to establish serial communication between PC/notebook and automatic feeder.
	<ul style="list-style-type: none"> The setup of the UpdateManager contains the incorrect interface 	<ol style="list-style-type: none"> 1. Check which interface used for data exchange between PC and control of the automatic feeder. 2. Select the corresponding interface in the setup of the UpdateManager.

Mounting instructions: UpdateManager

Re: SA2(+), SA2000, SM2Plus, Compact, Vario, Concentrate feeder, Animal scales, Automatic Fever Measuring

Date October 16, 2007

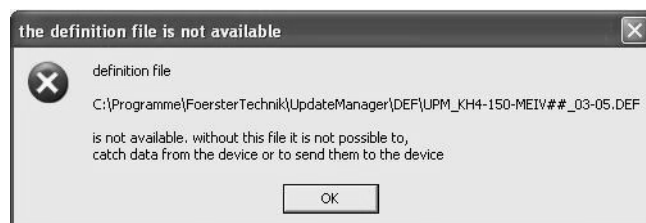


Page 27 of 29

Mounting and operating instructions

Fault	Cause	Remedy
No connection	<ul style="list-style-type: none"> The USB-Update-Set is not selected in the setup of the UpdateManager resp. the driver is not yet installed onto PC/notebook. 	<ul style="list-style-type: none"> Check whether in the setup of the UpdateManager the list item USB is selectable under interface. If yes, select USB. 1. If USB is not selectable, you must install the driver of the Update-Set onto your PC/notebook before starting update. 2. Under interface select USB in the setup of the UpdateManager. 3. Restart update.

5.4.2 The DEF-file is missing



Fault	Cause	Remedy
DEF-(definition) file not found	<ul style="list-style-type: none"> The DEF-file is missing 	Download the current version of the UpdateManager from the Förster-website and install it onto your PC/notebook.
	<ul style="list-style-type: none"> The UpdateManager searches for the DEF-file in the wrong directory. 	Click the button DEF-file directory and enter the correct path.

Mounting instructions: UpdateManager

Re: SA2(+), SA2000, SM2Plus, Compact, Vario, Concentrate feeder, Animal scales, Automatic Fever Measuring

Date October 16, 2007



Mounting and operating instructions

Fault	Cause	Remedy
DEF-(definition) file not found	<ul style="list-style-type: none"> The program version of the automatic feeder cannot be updated. 	

5.4.3 The BinHex-file is missing

Fault	Cause	Remedy
BinHex-file not found	<ul style="list-style-type: none"> The BinHex-file is missing 	Download the current version of the UpdateManager from the Förster-website and install it onto your PC/notebook.
	<ul style="list-style-type: none"> The UpdateManager is searching for the BinHex-file in the wrong directory. 	Click the button BinHex-file directory and enter the correct path.
	<ul style="list-style-type: none"> The program version of the automatic feeder cannot be updated. 	

Mounting instructions: UpdateManager

Re: SA2(+), SA2000, SM2Plus, Compact, Vario, Concentrate feeder, Animal scales, Automatic Fever Measuring

Date October 16, 2007

